



WARSAW UNIVERSITY OF TECHNOLOGY  
Faculty of Geodesy and Cartography



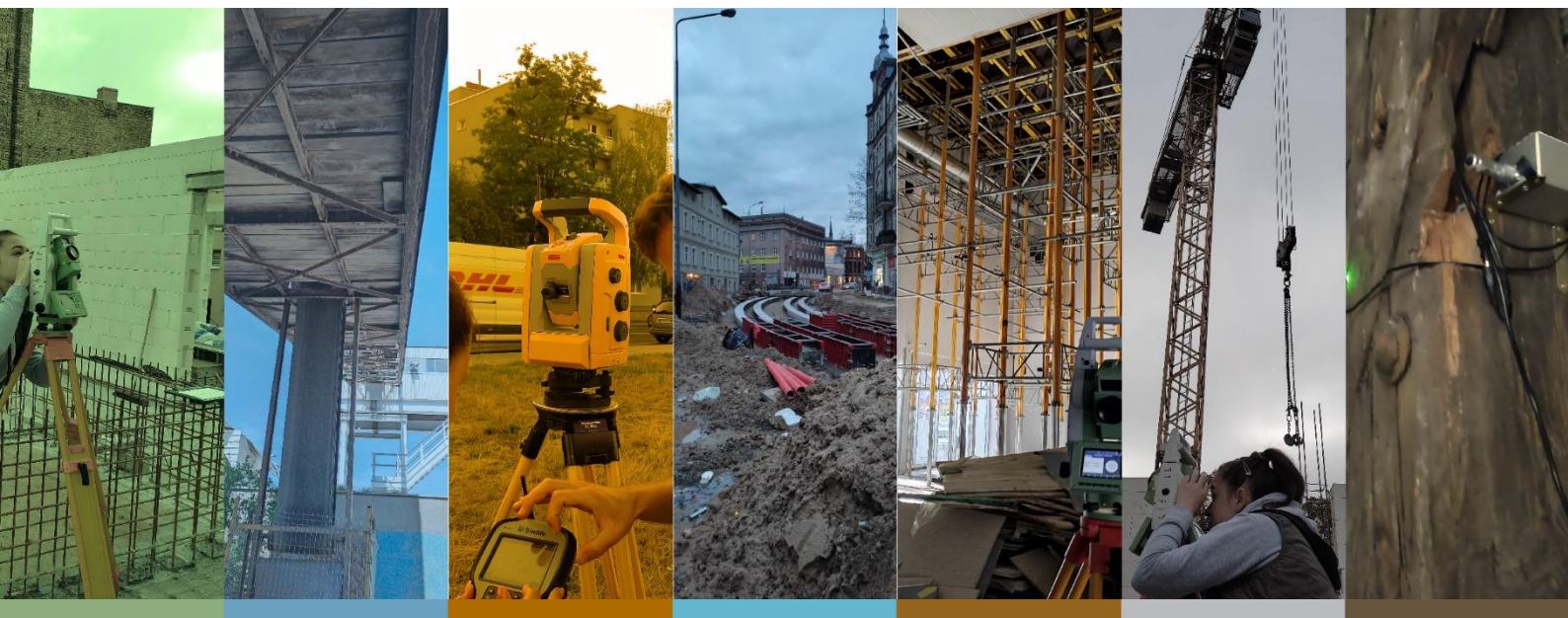
POZNAN UNIVERSITY OF TECHNOLOGY  
Faculty of Civil and Transport Engineering



ASSOCIATION OF POLISH SURVEYORS  
Section of Engineering Surveying

## XVI International Science and Technology Conference CURRENT PROBLEMS IN ENGINEERING SURVEYING

### Engineering geodesy for the development of a sustainable industry



Poznan, Poland, 21-23 September 2023 r.

## Bulletin No. 2



## SCIENTIFIC COMMITTEE

### Presidium:

Prof. Janina Zaczek-Peplinska, Warsaw University of Technology

Prof. Marek Woźniak, Warsaw University of Technology

Prof. Ireneusz Wyczałek, Poznan University of Technology

### Members:

Prof. Dr. Janusz Bogusz – Military University of Technology, Poland

Prof. Dr. Henryk Bryś – Professor Emeritus, Poland

Prof. Dr. Roman Kadaj – Rzeszow University of Technology, Poland

Prof. Dr. Waldemar Kamiński – Gdansk University of Technology, Poland

Prof. Dr. Edward Nowak – Warsaw University of Technology, Poland

Prof. Dr. Edward Osada – University of Lower Silesia, Poland

Prof. Dr. Witold Prószyński – Warsaw University of Technology, Poland

Prof. Dr. Bogdan Wolski – Kielce University of Technology, Poland

Prof. Kazimierz Ćmielewski – Wroclaw University of Environmental and Life Sciences, Poland

Prof. Robert Duchnowski – University of Warmia and Mazury, Poland

Prof. Maria Mrówczyńska – University of Zielona Gora, Poland

Prof. Andrzej Pachuta – Warsaw University of Technology, Poland

Prof. Michał Strach – AGH University of Science and Technology, Poland

Prof. Carlo Esposito – Rome Sapienza University, Italy

Prof. Paolo Mazzanti – Rome Sapienza University, Italy

Prof. Hans-Berndt Neuner – Technische Universität Wien, Austria

Prof. Ivan Puente – Defense University Centre, Spanish Naval Academy, Marin, Spain

Prof. Anna Szostak-Chrzanowski – University of New Brunswick, Canada

Cooperation – Prof. Volker Schwieger – Technische Universität Stuttgart, Germany

## ORGANIZATION COMMITTEE

Dr. **Krzysztof Karsznia** – Chairman (WUT)

MSc. **Ewa Świerczyńska** – Event Assistant (WUT)

MSc. **Iwona Jankowska** – Public Relations (WUT)

MSc. **Krzysztof Książek** – Public Relations (WUT)

Dr. **Artur Plichta** – Chairman (PUT)

Msc. **Joanna Papis** – Committee Member (PUT)

MSc. **Anna Małek** – Committee Member (PUT)

## IMPORTANT ORGANIZATIONAL INFORMATION

We kindly invite you to participate in the International Conference APGI/CPES „Engineering geodesy for the development of a sustainable industry”, which will be held on **September 21-23 in Poznan, Poland in Best Western Hotel Edison**:

<https://www.hoteledison.com.pl>



## PROPOSED CONFERENCE TOPICS

1. Theoretical aspects of Surveying Engineering
2. Measurement technologies – total stations, GNSS, scanning, photogrammetry, inertial sensors
3. ICT in engineering geodesy
4. Engineering measurements in geotechnics, geodynamics, underground construction and mining
5. Building Information Modelling (BIM) – modelling and information management of engineering objects, creating Digital Twins
6. Engineering geodesy in monitoring hazards of engineering and civil structures
7. Engineering geodesy in structural monitoring and geohazards
8. Photogrammetry and Remote Sensing in deformation studies
9. Geodetic and Structural Health Monitoring systems (GMS, SHM)
10. Monitoring of the technical condition of historical objects in endangered areas

## INFORMATION AND APPLICATION FORM

Conference webpage: [https://apgi.gik.pw.edu.pl/apgi\\_en](https://apgi.gik.pw.edu.pl/apgi_en)

Participation application: <https://forms.office.com/e/46jM2mLaNh>

## DEADLINES

<b>31 JAN 2023</b>	<b>launching the conference website, bulletin no. 2</b>
<b>15 MAY 2023</b>	<b>registration and conference fee payment</b>
<b>1 JUN 2023</b>	<b>submission of abstracts and posters</b>
<b>10 JUL 2023</b>	<b>preliminary acceptance of papers and posters</b>
<b>15 AUG 2023</b>	<b>uploading presentation and poster templates</b>
<b>15 SEPT 2023</b>	<b>submitting full content of papers and posters</b>

## FEES

### Payments in EURO:

Conference participation with the accommodation in a double room: **400 € (23% VAT included)**

Conference participation with the accommodation in a single room: **420 € (23% VAT included)**

Conference participation without accommodation and breakfast: **345 € (23% VAT included)**

### Bank transfer:

**IBAN: PL65 1140 2062 0000 3522 2900 1032**

**BIC / SWIFT: BREXPLPW**

Account owner: **Association of Polish Surveyors**

Transfer name: **APGI/CPES, *First Name, Family Name***

### Alternative payments in PLN:

Conference participation with the accommodation in a double room: **1500 PLN + 23% VAT**

Conference participation with the accommodation in a single room: **1600 PLN + 23% VAT**

Conference participation without accommodation and breakfast: **1300 PLN + 23% VAT**

### Bank transfer:

Account number: **20 1140 1010 0000 3522 2900 1009**

Account owner: **Stowarzyszenie Geodetów Polskich – Oddział Wielkopolski w Poznaniu**

Transfer name: **APGI/CPES, First Name, Family Name**

**IMPORTANT:** Due to the limited hotel capacity, after filling the limit of people, it will no longer be possible to book further accommodation (the order of applications decides).

**The conference fee includes** participation costs, hotel accommodation (night from 21 to 22 September with breakfast), full board and conference materials.

It is possible to extend the stay until September 23 and visit Poznan on this day – the additional fee is **105 € (23% VAT included)** or **400 PLN + 23% VAT** including dinner, accommodation, and breakfast.

## PUBLICATIONS

Abstracts and poster summaries will be published in the conference materials.

**Additionally, authors can submit their papers for publication in the following journals:**

1. Miscellanea Geographica. <https://sciendo.com/journal/MGRSD> (special issue)
2. Archives of Civil Engineering. <https://ace.il.pw.edu.pl> (paid journal)
3. Advances in Geodesy and Geoinformation PAN. <https://journals.pan.pl/agg>
4. Reports on Geodesy and Geoinformatics. <https://www.rgg.edu.pl/index.php/RGG> (special issue)
5. Przegląd Geodezyjny. <http://www.przegladgeodezyjny.pl>
6. Polish Cartographic Review. <http://geoinformatics.uw.edu.pl/polski-przegląd-kartograficzny>

## WE CORDIALLY INVITE YOU TO PARTICIPATE!



### CURRENT PROBLEMS IN ENGINEERING SURVEYING

Engineering geodesy for the development of a sustainable industry

[https://apgi.gik.pw.edu.pl/apgi\\_en](https://apgi.gik.pw.edu.pl/apgi_en)